

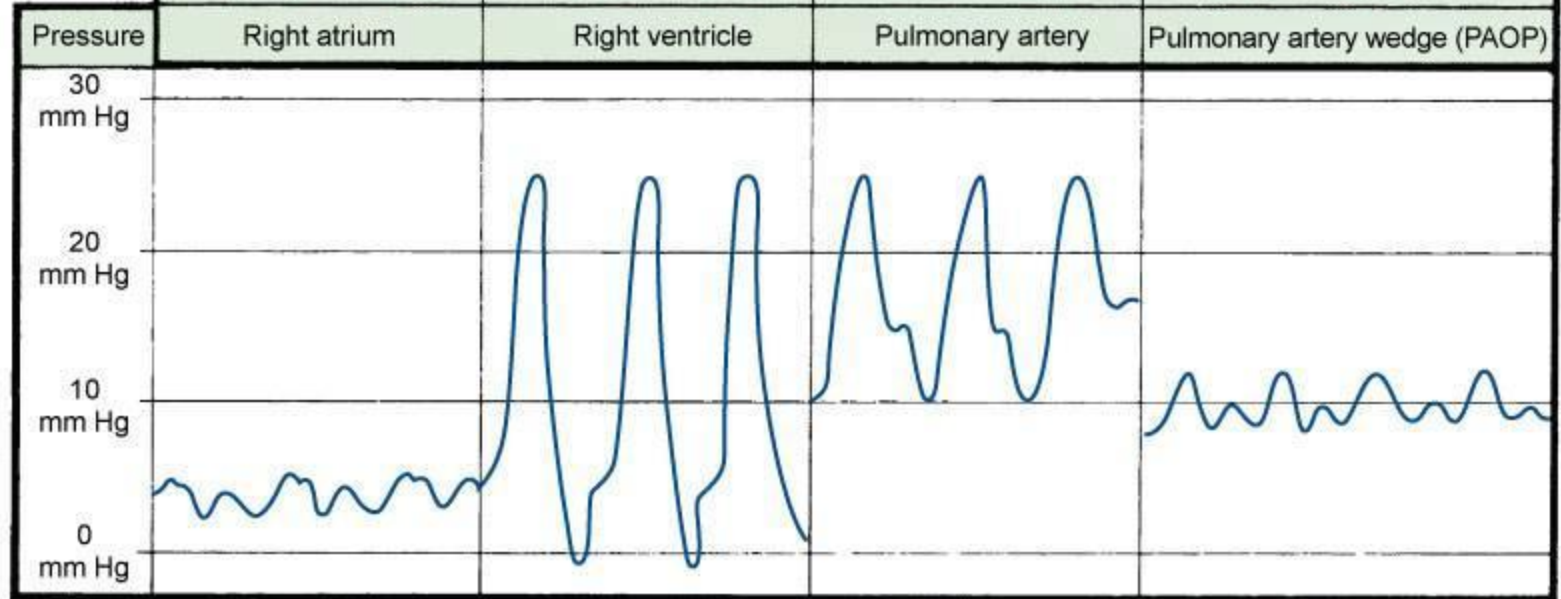
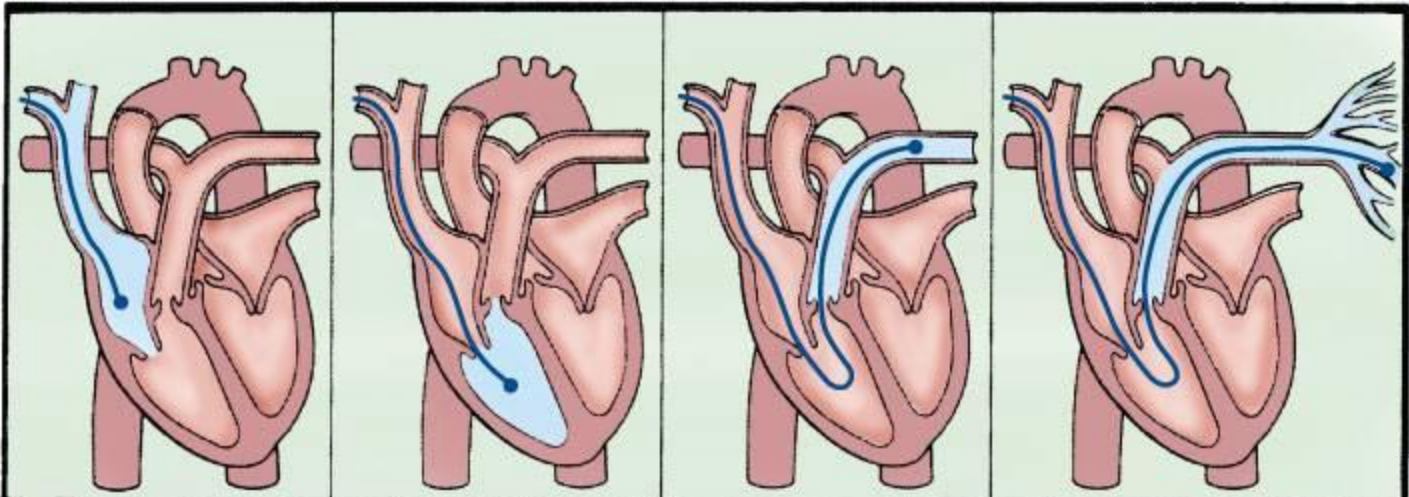
INTRODUCTION TO HEMODYNAMICS II

John Hamaty D.O. FACC, FACOI, FASE

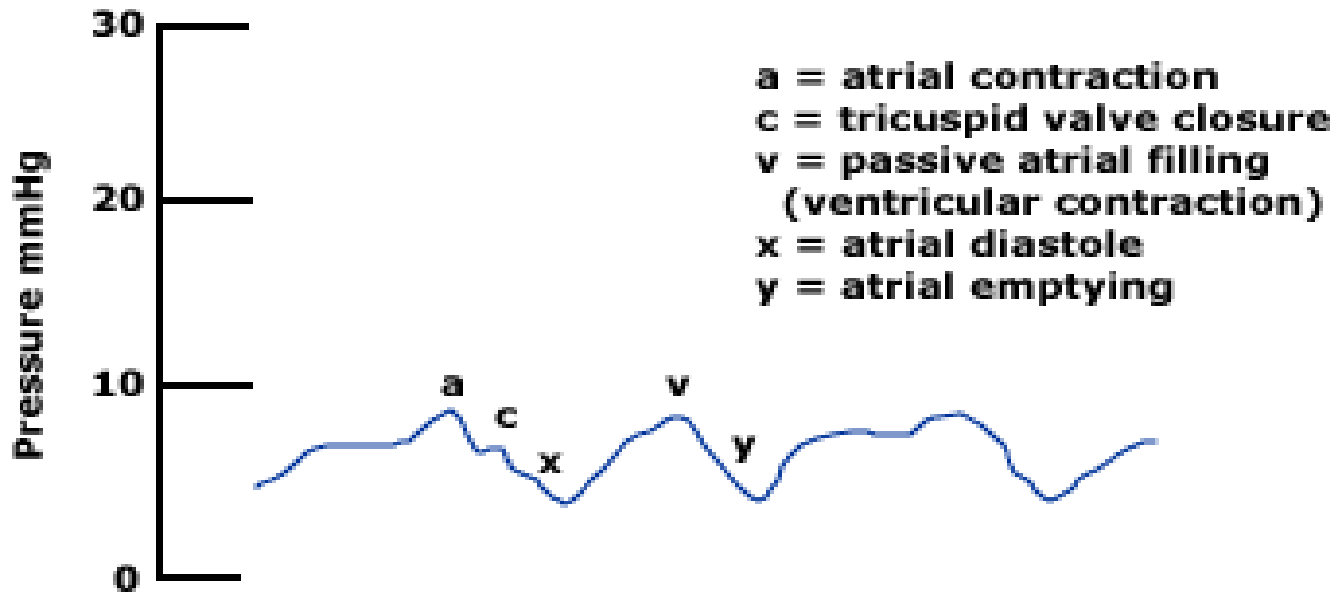
CENTRAL VENOUS PRESSURE(CVP)= RIGHT ATRIAL PRESSURE

Venous pressure is a term that represents the average blood pressure within the venous compartment. The term "**central venous pressure**" (CVP) describes the pressure in the thoracic vena cava near the right atrium (therefore CVP and right atrial pressure are essentially the same). CVP is an important concept in clinical cardiology because it is a major determinant of the filling pressure and therefore the [preload](#) of the right ventricle, which regulates stroke volume through the [Frank-Starling mechanism](#).

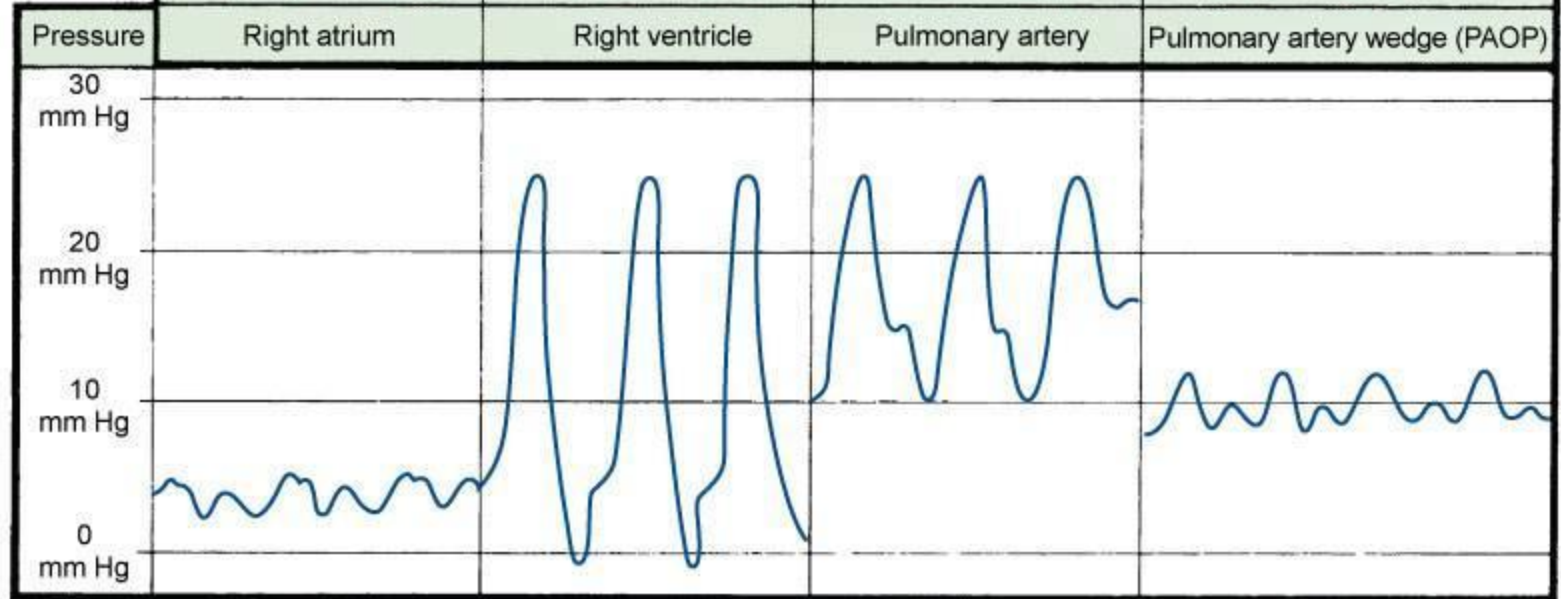
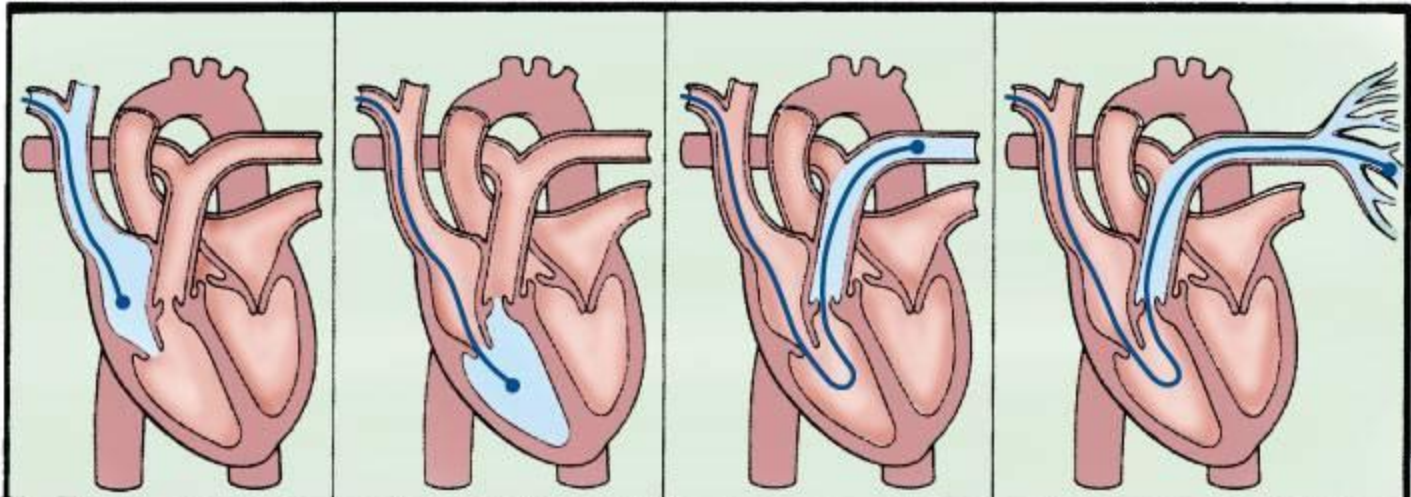
Flow-directed catheter



Right atrium

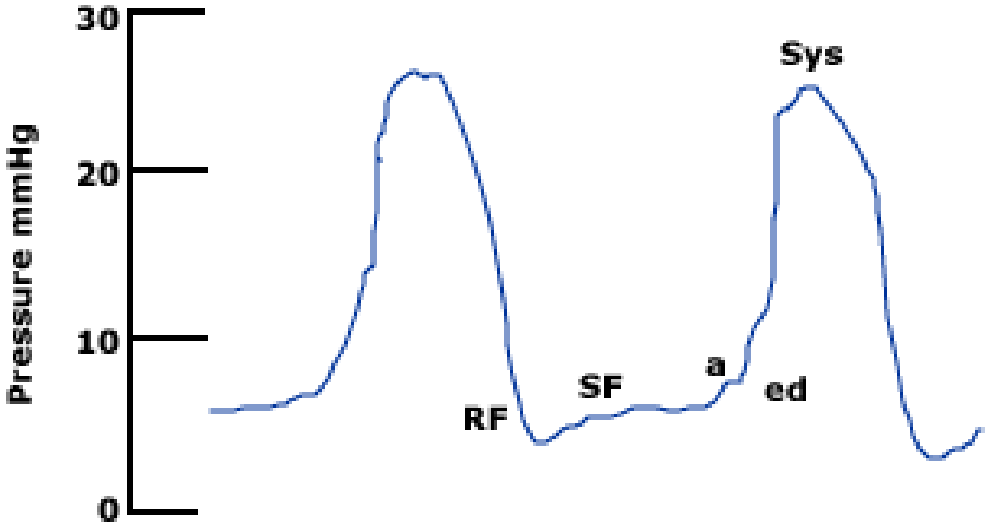


Flow-directed catheter



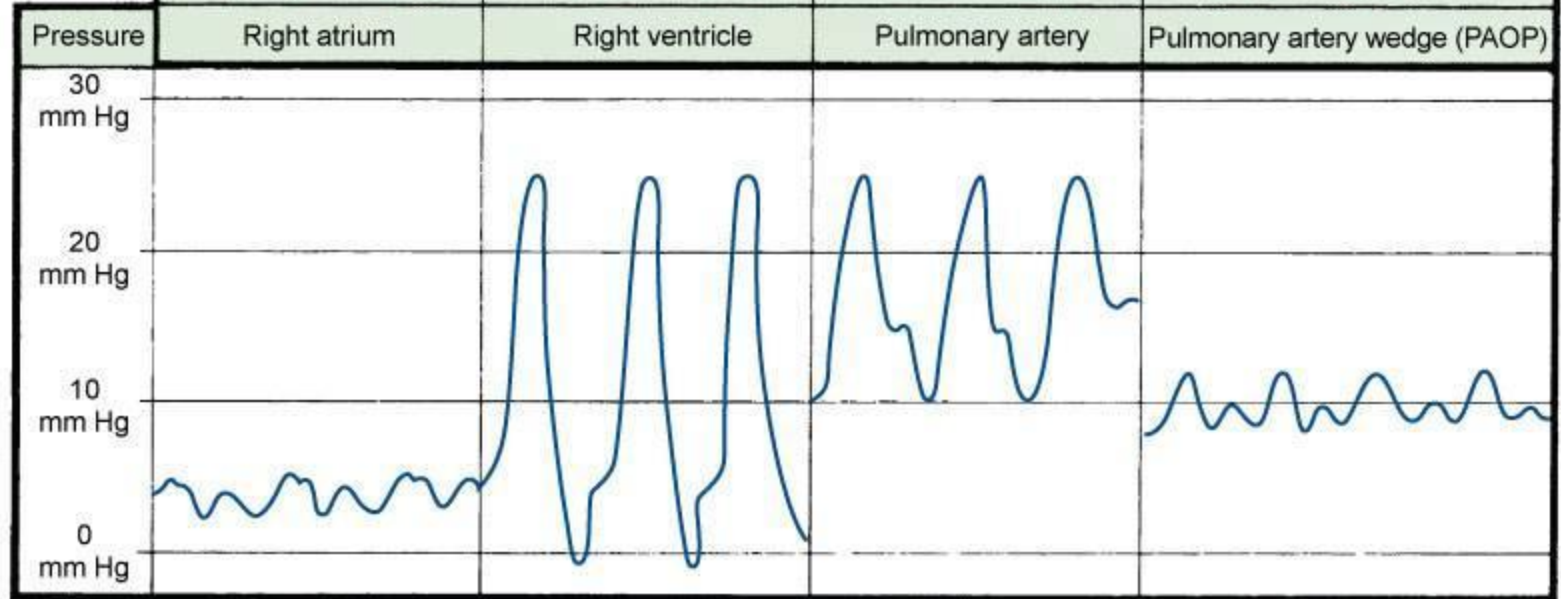
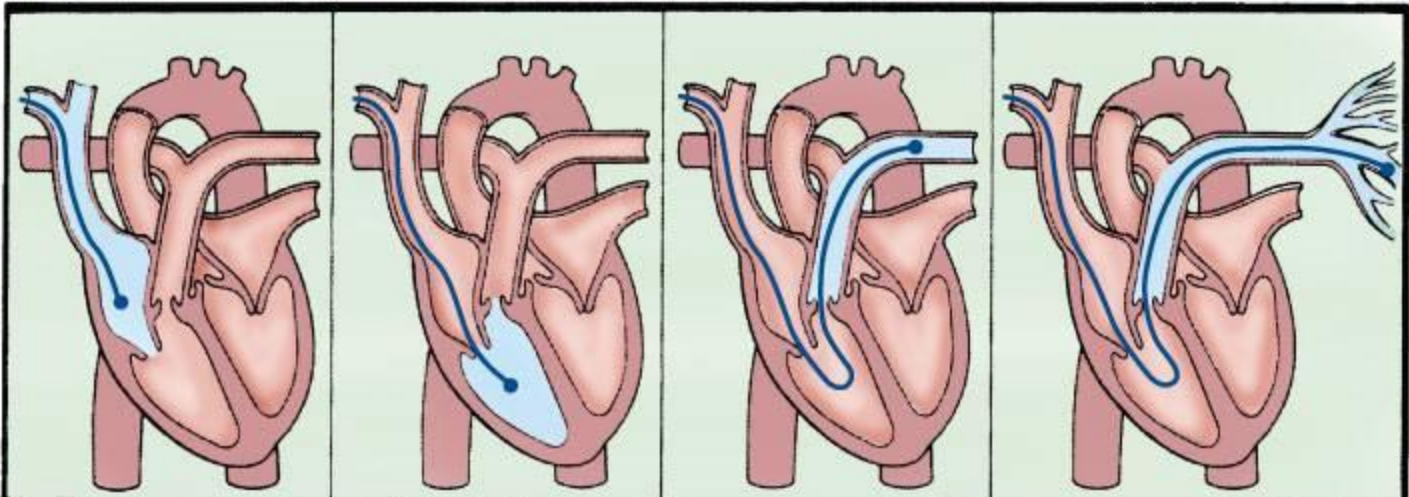
Right ventricle

ECG

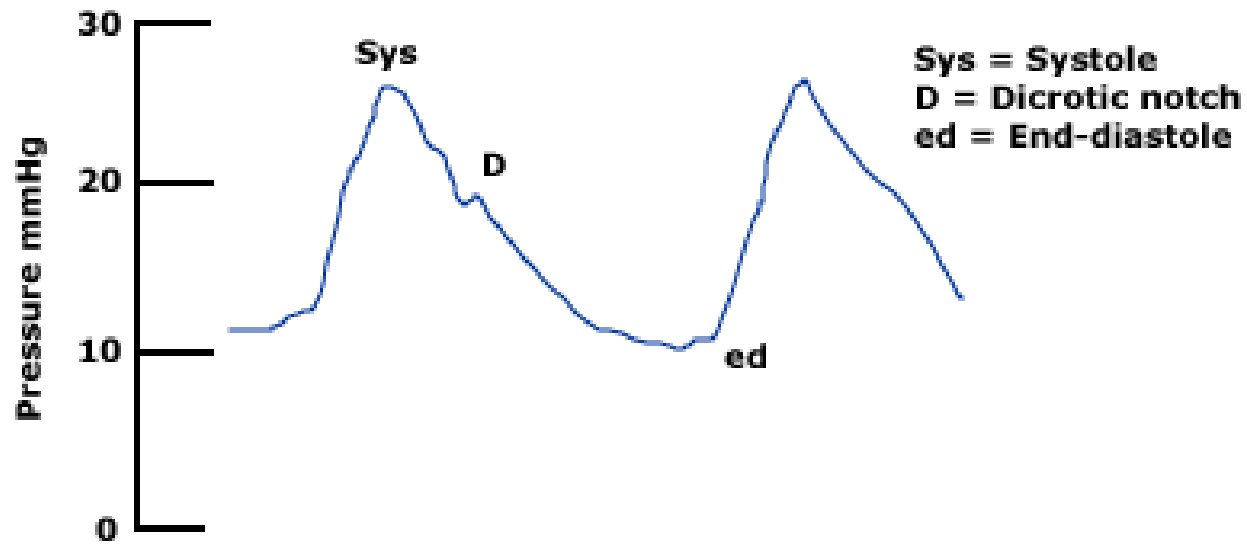


RF = Rapid filling
SF = Slow filling
a = Atrial contraction
ed = End-diastole
Sys = Systole

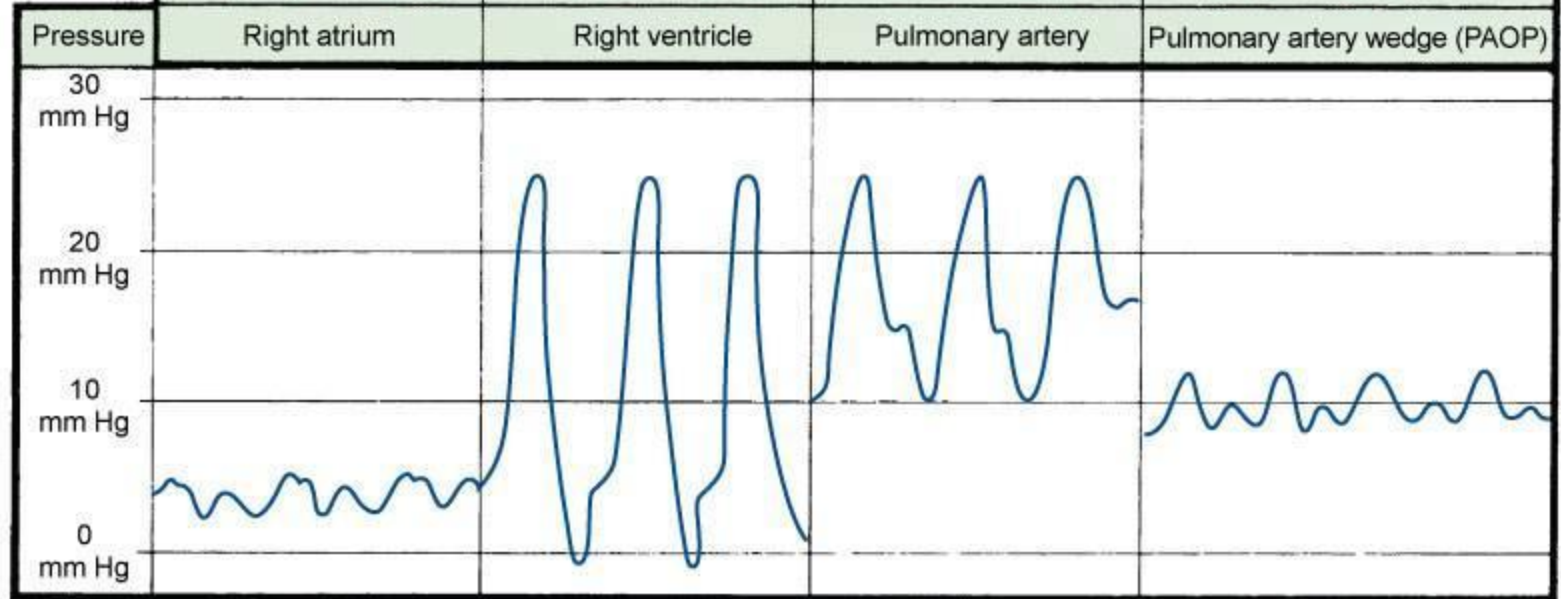
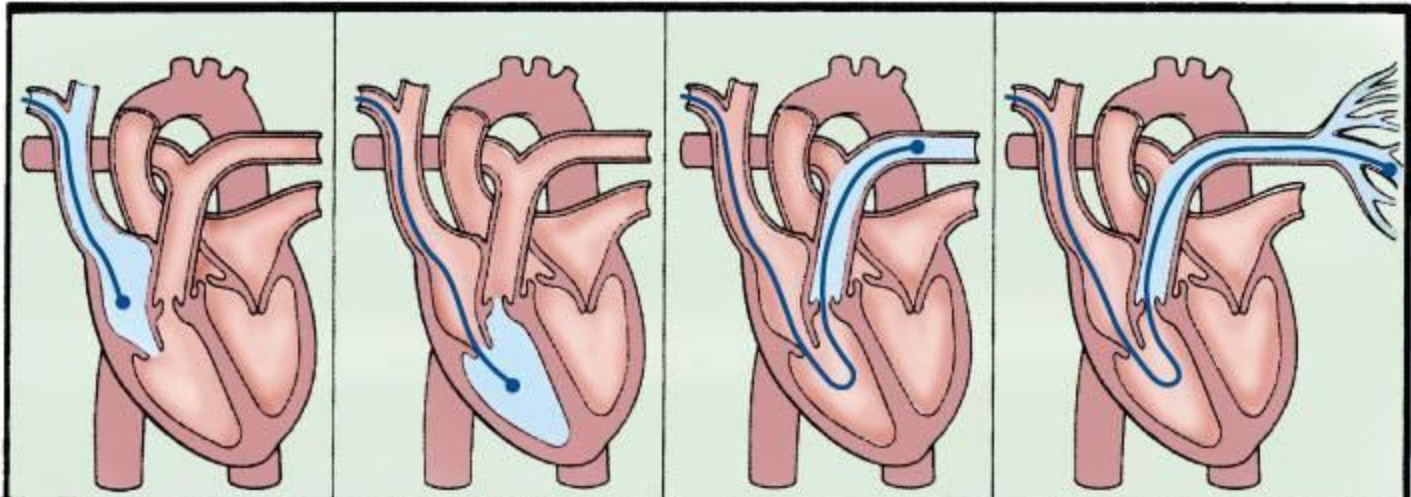
Flow-directed catheter



Pulmonary artery



Flow-directed catheter



Pulmonary artery wedge

